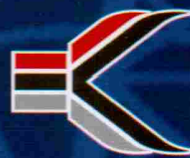


CURRENT CARRYING
CAPACITY UPTO 125 KA



KAPITRODE®

Earthing For Lifelong Safety



KAPILANSH
DHATU UDYOG (P) LTD.

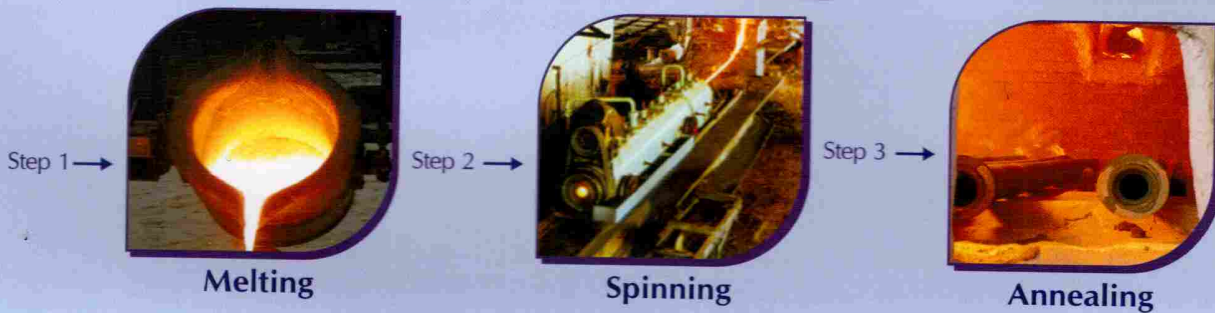
Centrifugally Cast Iron Earthing Electrode
As per IS 3043 Code of Practice

www.kapilansh.com

PROFILE

We, **Kapilansh Dhatu Udyog Pvt. Ltd.** with our expertise in manufacturing Centrifugally Cast Iron Pipes, Use **De Lavaud Process** for manufacturing **Centrifugal** Pipes. A true centrifugal Casting process in which each pipe is casted individually in metal moulds ensuring superior quality. The superior quality assurance and control measures ensure you get the best piping for the superior earthing system.

MANUFACTURING PROCESS



KAPITRODE® RANGE



KAPITRODE®
with G.I. Clamp
(HDG)



KAPITRODE®
with flange



KAPITRODE®
with G.I. Clamp (HDG)
& funnel



KAPITRODE®
with Cone

LT Earthing								HT Earthing					
NB	OD	Thick-ness	Lengths Available					NB	OD	Thick-ness	Lengths Available		
50	57	3.5	1500	1800	-	-	-	100	114	7.0	2500	2750	3000
75	82	3.5	1500	1800	2500	2750	2900	100	120	10.0	2500	2750	3000
100	108	4.0	1500	1800	2500	2750	2900	100	126	13.0	2500	2750	3000
150	160	5.0	-	-	2500	2750	2900	150	170	10.0	2500	2750	3000
								150	176	13.0	2500	2750	3000

● All Dimensions are in millimeters ● Tolerances applicable as per relevant standards

For any custom made requirements we are happy to have your valuable enquiry & drawings. Being a primary manufacturer, we have catered to many specific requirements of Consultants and Organisations for different length and diameter combinations.

INSTALLATION PROCESS



Piling
Step 1 →



Inserting Electrode
Step 2 →



Backfilling
Step 3 →





Earth Pit
Step 4

ADVANTAGES / BENEFITS

- Durable & reliable
- Excellent connectivity & conductivity
- Excellent & Uniform current dissipation
- Less overall cost of ownership
- Easy installation
- Safety to human life & electrical system
- Electrical Resistivity of C.I is $0.8 \mu\Omega/\text{Mtr}$
- Higher surface area of contact
- Best in-class corrosion resistance

HIGH SURFACE AREA OF CONTACT

SURFACE AREA OF PLATE	SURFACE AREA OF KAPITRODE®
Standard Plate Size is 600 x 600 x 12 mm thick therefore the surface area is 1. $600 \times 600 \times 2 = 720000$ sq.mm 2. $600 \times 4 \times 12 = 28800$ sq.mm Total (1+2) = 748800 sq.mm	Standard Pipe Size is 100 x 3000 x 13 mm thick (The outer Dia is 126 mm) therefore the surface area is 3.1415 x 126 x 3000 = 11,871,487 sqmm
	

Thus, the surface area of the Pipe type earthing electrode is almost 1.6 times than that of the Plate type earthing. While we have not considered the inner surface of the pipe, but as per our experience the inner surface has an equal contribution for fault current dissipation.

Rusted / Corroded earthing is like a fractured bone. You will realise the defect only when you feel immense pain (i.e. electrical shock or leakage in case of earthing) and do an X-RAY.

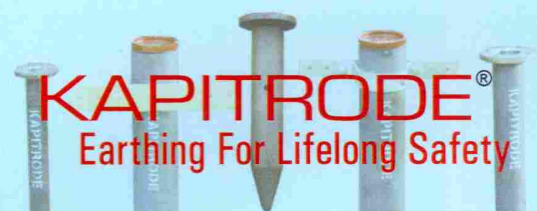
IS YOUR EARTHING LIKE THIS?



BETTER CORROSION RESISTANCE

TESTED (BY UNDERGROUND IMMERSION METHOD)
FOR CORROSION RATE AT
NATIONAL METALLURGICAL LAB, JAMSHEDPUR

	Exposure Time, h	Corrosion Rate (mpy)
Cast Iron	4512h (188d)	1.83
GI Tube-1	4512h (188d)	2.65



KAPITRODE®
Earthing For Lifelong Safety

EARTHING IS ESSENTIAL FOR



Power Generation



Wind & Solar Energy



Transmission & Distribution



Mines



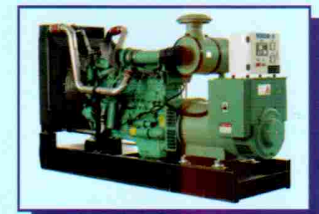
Industries



Telecommunication Towers



Commercial & Domestic



Generators

Approved By

MSEDCL, MSETCL,
DRDO, GEB, PWD,
KPTCL, MHADA,
APEPDCL, CIDCO

ACCESSORIES



Earth Pit cover



Back Fill compound

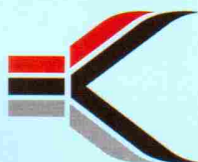


MS/GI Flats

We Also Manufacture

- Centrifugally Cast (Spun) Iron Pressure Pipes (conforming to IS : 1536)
- Centrifugally Cast (Spun) Iron Soil, Waste & Ventilating Pipes, Fittings & Accessories, (conforming to IS : 3989)
- Centrifugal Hubless Cast Iron Pipes & Fittings (IS : 15905)

DEALER / REPRESENTATIVE



KAPILANSH
DHATU UDYOG (P) LTD.

An ISO 9001:2015 Certified Company

Corporate Office & Works : Kh. No. 63, Khairy, Kamptee Road, Nagpur 440026,

Phone No. : 9272225067, 9225337835, E-mail : earthing@kapilansh.com

Website : www.kapilansh.com